



Formulation

Water Based High Gloss Direct to Metal Acrylic using HALOX 550 WF

		<u>% Wt</u>	<u>Class</u>
Water		6.37	
Dowanol DPnB	[1]	3.18	Solvent
Petrolite D-1038 Dispersion	[2]	2.12	Dispersant
AMP-95	[3]	0.16	Amine
Foamaster NXZ	[4]	0.16	Defoamer
KRONOS 2310	[5]	19.07	Ti Dioxide
Rheolate 300	[6]	0.32	Thickener
<i>High speed disperse to 6+ NS Hegman grind.</i>			
NeoCryl A-6099	[7]	52.32	Resin
HALOX 550 WF	[8]	2.04	Inhibitor
<i>Premix the following, then add to above under agitation.</i>			
Ammonia Hydroxide (28%)		0.52	Amine
Water		8.91	
<i>Premix the next 2 ingredients before adding.</i>			
Ammonium benzoate		0.15	Flash Rust Inhibitor
Water		1.39	
<i>Then add the following in order listed.</i>			
Dehydran 1293	[4]	0.21	Defoamer
BYK-301	[9]	0.21	Surfactant
BYK-346	[10]	0.29	Surfactant
Dibutyl Phthalate	[11]	2.19	Solvent
Acrysol RM-8W	[12]	0.39	Thickener
TOTAL		100.00	

Formula Constants

Density (g/L)	1191.11
Weight Pigment (%)	19.22
Volume Pigment (%)	5.82
Weight Solids (%)	41.97
Volume Solids (%)	30.31
PVC (%)	20.59
VOC (g/L)	207.30

Formula Properties

Viscosity - Stormer (KU)	85 - 95
@ 25°C	
pH @ 25°C	8.5 - 9.0

Supplier Key

- [1] The Dow Chemical Company
- [2] Baker Hughes (Baker Petrolite Polymers Divisi
- [3] ANGUS Chemical Company
- [4] Cognis Corporation
- [5] KRONOS, Inc.
- [6] Elementis Specialties
- [7] NeoResins Inc.
- [8] HALOX
- [9] Byk - Chemie USA Inc.
- [10] BYK - Chemie
- [11] Eastman Chemical Company
- [12] Rohm and Haas

The information contained herein is correct to the best of our knowledge, but is intended only as a source of information. The recommendations or suggestions herein are made without guarantee of representation as to results, and we suggest that you evaluate the recommendations contained in this formulation in your own laboratory prior to use.



DTM – Salt Spray – Cold Roll Steel – 336 hrs – 1.5 mils (40 μm)



Control



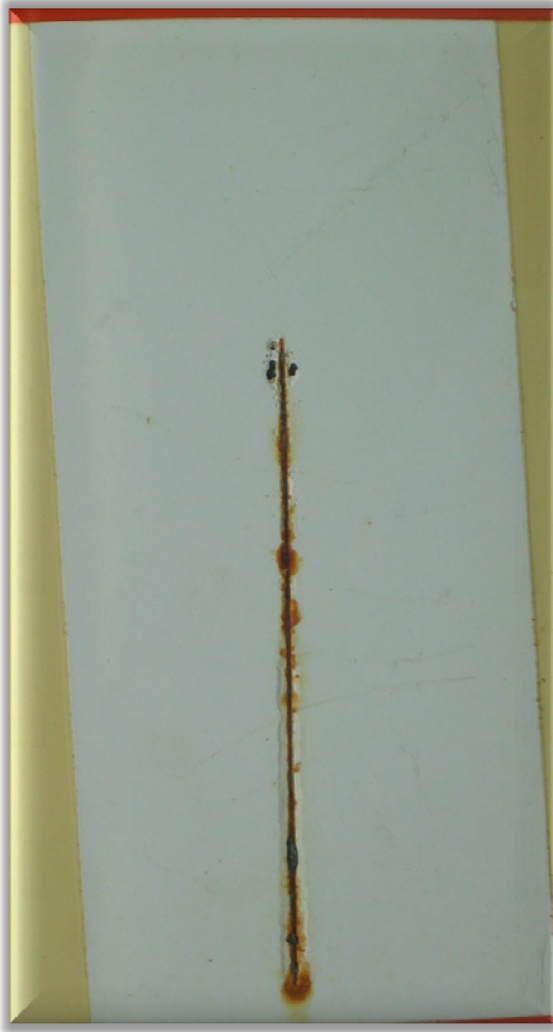
2% Comp. A



2% HALOX 550 WF



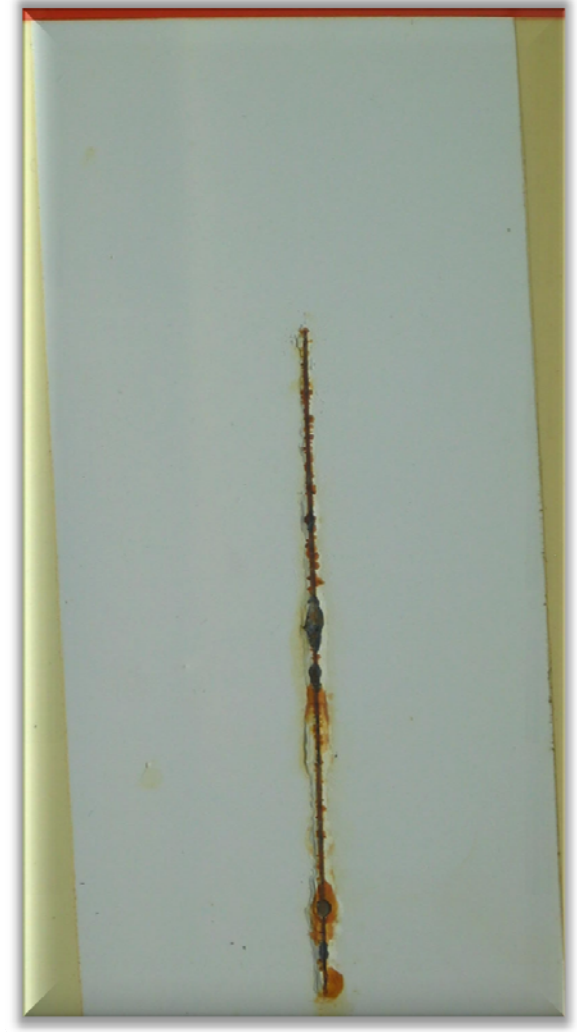
DTM – QUV/PROHESION– Cold Roll Steel – 336 hrs – 1.5 mils (40 μm)



Control



2% Comp. A



2% HALOX 550 WF